

- 1. Rail
- 2. Pre-assembled support
- 3. Rail clamp
- 4. Inter clamp
- 5. End clamp
- 6. Ground screw

Structure



- 1. Girder
- 2. Girder joint 70
- 3. Girder joint 140
- 4. Corrugated U-anchor plate
- 5. Rectangular tube

Features

- **Highly pre-assembled, Easy & quick installation**
Highly pre-assembled with less components, no additional cutting and drilling, reducing construction difficulty , saving time and project cost greatly.
- **Adaptable and Durable**
High industrial-grade aluminum alloy used for main components, which improves the surface corrosion resistance and long service life according to project requirements.
- **Flexible adjustment, Optimize appearance**
Realize the omni-directional adjustment design according to the terrain, the construction is simple and convenient, the appearance can be optimized perfectly.

Overview

Monolith GA II-AL Double-Post Mounting System, simplified structure with less components, highly pre-assembled features lead to prominent efficiency of on-site installation. Suitable for large, medium and small scale ground solar PV power station. While ensuring the structural strength, the material cost can be reduced to the maximum extent. This support system with better adjustability which can realize the arbitrary adjustment of the front and rear, left and right, up and down directions.



System Parameters

Installation Site	Ground	Design Standard	AS/NZS 1170、ASCE7-10
Tilt Angle	0-60°		JIS C 8955: 2017 International Building code:IBC 2009
Wind Load	60m/s	Material	AL6005-T5(Anodized)
Snow Load	1.6KN/m ²	Fastener	SUS304 & Zinc-Nickel Alloy
Applicable Solar Module	Framed or Frameless	Color	Silver or Customized
Panel Layout	Portrait or Landscape	Warranty	10 Years

⊙ Customized order

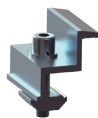
⊙ Technical support and installation guidance

⊙ 10 years warranty

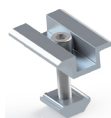
⊙ Overseas storage

⊙ Perfect after-sales service

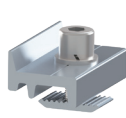
System Component List



End clamp kit
End clamp
W module
Washer
Hexagon socket screw



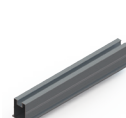
Inter clamp kit
Inter clamp
W module
Washer
Hexagon socket screw



Rail clamp kit
Rail clamp
Corrugated module
Washer
Hexagon socket screw



Corrugated U-anchor plate



T rail



Girder



Rectangular tube



Ground screw